

Powerline Tech SOHO Kit

KIT-I01P-TE, KIT-I01N-TE

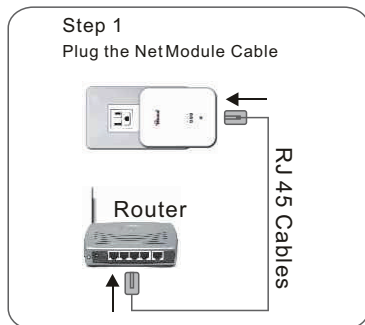


The Home+ SOHO Kit is a dedicated application allowing home owners to monitor and control home devices via household power line wiring and the internet. Users can plug IP cameras, audio devices or lightings in any receptacles to connect to the Home PC via the power line. The Home+ SOHO Kit system is free from the limitation of typical home automation that requires a 24-hr operating home PC and cable connection, so home owners can easily monitor and operate without having the home PC "ON" at all times. The Home+ SOHO Kit system is the perfect choice for home automation that provides surveillance and entertainment at the best performance in cost and time.

Features

- No More Wire, Apply Existed AC Outlet for Network Connection
- Stylish & Modern Design to Fit Your Home Decoration
- Fire-Proof Housing (Case, Cover)
- Home Security
 - Max. to Four (4) Video Monitoring & Recording on Windows PC
 - Max. to Sixteen (16) Audio Monitoring & Recording on Windows PC
 - Motion Detection Alarm Notification via E-mail
 - Programmable Recording for Date/Time Search Playback
- Intelligent Night-Vision Design to Ensure Clear Video at night without IR LED
- Support up to Two (2) Remote Accesses
- Remote Video/ Audio Surveillance & Appliance Control via Windows PC or Handheld
- Support both Dynamic & Static IP
- Intelligent Home+ Software for Easy Internet Setting & Remote Access
- Plug & Play, DIY Designed to Protect Your Family Privacy

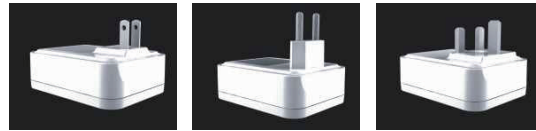
Just 3 Steps



SOHO Kit Package

- | | |
|--|----------------|
| 1. PowerLine Network module | Turan168-Net/X |
| 2. PowerLine IP Camera | Turan168-Cam/X |
| 3. Camera Table Stand | |
| 4. Home+ Software CD | Turan168-Soft |
| 5. RJ 45 Cables | |
| 6. Wall/Ceiling mounted bracket (optional) | |

X = type of power plug



Type A(US)

Type C(Europe)

Type G(UK)



Specification

PowerLine Network Module

ModelNr	
Turan168-Net/A	: Type A plug (ungrounded)
Turan168-Net/C	: Type C plug (unearthed)
Turan168-Net/G	: Type G plug (unearthed)

Electrical	
LEDs	: Power, PowerLine Act, Network Act
Power Input	: 90 VAC ~ 240 VAC, 50/60 Hz
Power Consumption	: 1.6 W

Data Transmission	
Encryption Protection	: 56-bit DES
PowerLine	: HomePlug Turbo 85M bps
PowerLine Coverage	: 200M over home power supply grid
Network	: HTTP, TCP/IP, UDP, DHCP

Mechanical	
Housing Material	: ABS 94V0 (Fire-Proof, Wall-Plug type)
Housing Color	: High Glossy White
Dimension (L x W x H)	: 87 x 66 x 33 mm (without Plug Pin)
Weight	: 113 g
Connector	: RJ45
Installation	: Wall-plug type

Environment	
Storage Temperature	: -25 °C to +75 °C
Operating Temperature	: 0 °C to +40 °C
Humidity	: 5% to 90% relative

Approval : CE, FCC, LVD

Supplied Accessory : Ethernet Cable RJ45-RJ45 (Cat5)

Video	
Sensor	: 1/4-inch CMOS Sensor
Resolution	: 640 x 480, 320 x 240 pixels
Frame Rate	: 30pps (max)
Lenses	: 4.5mm
View Angel	: 52° (Diagonal)
Gamma Correction	: Auto
White Balance Gain Ctrl.	: Auto
R/G/B Gain Control	: Auto (individual color)

Data Transmission	
Encryption Protection	: 56-bit DES
PowerLine	: HomePlug Turbo 85M bps
PowerLine Coverage	: 200M surrounded home power supply grid
Network	: HTTP, TCP/IP, UDP, DHCP
DDNS support	: Yes
Web Browser	: Built-in, support any Active X

Mechanical	
Housing Material	: ABS 94V0 (Fire-Proof)
Housing Color	: High Glossy White
Lenses Tilt	: 100°
Dimension (L x W x H)	: 132 x 38.5 x 106 mm 132 x 78.5 x 117 mm (with table stand)
Weight	: 460 g
Installation	
Table Stand	: Included
Wall/ Ceiling Screw Hole	: Built-in (Bracket is optional)

Environment	
Storage Temperature	: -25 °C to +75 °C
Operating Temperature	: 0 °C to +40 °C
Humidity	: 5% to 90% relative

Approval : CE, FCC, LVD

Supplied Accessory : Table-Stand for IP Camera Module

PowerLine IP Camera

ModelNr	
Turan168-Cam/B	: Type A plug (ungrounded)
Turan168-Cam/C	: Type C plug (unearthed)
Turan168-Cam/G	: Type G plug (unearthed)

Electrical	
CPU	: 32-bit RISC CPU
Flash Memory	: 4 MB
SDRAM	: 16MB
LEDs	: Power, PowerLine Act, Network Act
Power Cable	: 1.8M include power plug
Power Input	: 90 VAC ~ 240 VAC, 50/60 Hz
Power Consumption	: 3.3 W

Audio	
Microphone	: Built-in
Standard	: 10-bit ADC

Utility Software Support

Home+ Intelligent System	: Windows 98SE, 2000, ME, XP
Home+ Intelligent Remote	: Windows 98SE, 2000, ME, XP
Home+ Intelligent Cellular	: Windows Mobile

Supplied Accessories

Printed Installation & Operating Guide
CD-ROM (PDF manual, Home+ Software)

Optional Accessories

Wall/ Ceiling Mounting Bracket for IP Camera

Mounting Options

