

High Speed Pan&Tilt Network Camera

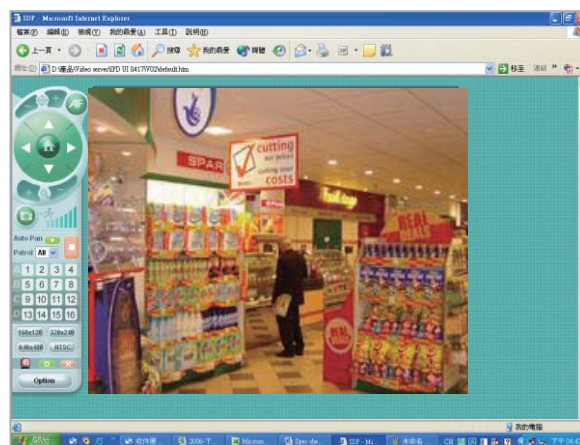
acuteDETECTOR a series of acuteEYE ^s product family	
	<ul style="list-style-type: none">■ High speed PT camera with IP■ Pan for 355°, tilt for 90°■ MPEG-4 / MJPEG dual compression■ Sony super-HAD CCD■ Support DDNS, DHCP, PPPoE, uPNP, SMTP, FTP■ Auto-run and line-scan functions■ 2 alarm-in + one alarm-out; optional IR illumination■ IE viewer in 6 languages (E, F, G, I, S and Chinese)■ Audio I/O function■ Embedded, surface, ceiling and wall mount

Pan & Tilt • Network • Night Vision

An acuteDETECTOR camera is a compact PT camera incorporating a modern network video server .

The acuteDETECTOR series is a remote-control pan-tilt camera created for indoor surveillance over LAN or WAN. Owing MPEG-4 and M-JPEG dual compressions, acuteDETECTOR provides options to users for choosing better transmission efficiency or image fidelity. Models in this series vary each other by CCD grade and wireless networking option.

The camera can pan 355° and tilt 90° and memorize up to 32 presets, among which the 1st 16 presets are split into 4 groups automatically for auto-run. Speed control is available on the screen, together with auto-run ON-off buttons. Users are segregated into administrator, power user and normal user that different authorization levels are provided. User may control the camera for pan and tilt through LAN or WAN. All models are capable to do 30-minute continuous scanning over all or selected presets, or just in between any two specific presets



The pan-tilt function, presets and auto-run furnish great advantages for IP surveillance systems, because the camera number, equivalent to required bandwidth so as everyday cost, will be saved in big time.

Each acuteDETECTOR camera has two inputs for connecting external sensors for event monitor and management – when the inputs receive signal, camera will turn to the pre-defined position.

The acuteDETECTOR cameras are compact and light weighted so they can be installed in almost any place inside a building, such as on ceiling, wall or embedded. Infra-red light is optional for surveillance in total-dark condition.

The acuteDETECTOR supports a great number of IP protocols like DHCP, DDNS, PPPoE, uPNP, FTP, SMTP, that they are easily fitted in most networking environments (public and virtual IP, fixed or dynamic, NAT...). Network setup and camera controls are carried out via browser-based software acuteESCORT, with 6 languages in the menu. The acuteBASE, a 16-CH software for the entire acuteEYE^s product family, is provided for recording, system application and management. To match up the actual Internet bandwidth for the optimum transmission quality, user may adjust data level by changing image size from large (VGA), medium (CIF) to small (QCIF) and bit rate.

Currently there are three models in this series –acuteDETECTOR^{HI} (480-line high resolution), acuteDETECTOR^{ME} (380-line medium resolution) and acuteDETECTOR^{IR} (medium resolution with IR LED). All the models are equipped with 1/3" Sony Super HAD CCD with 6mm board lens, delivering clear and quality picture. They are in compact size and light weight, thus can be easily mounted. Total weight of any acuteDETECTOR camera is less than 500gm (or 1.1 pounds), therefore can be hold by most regular camera holder for wall or pendant mount. An optional metal base is available for surface mount.

			DETECTOR ^{HI}	DETECTOR ^{me}	DETECTOR ^{IR}	
camera	Sensor	Type	Sony Super HAD color CCD			
		Size	1/3 inch			
		Scanning	line / field	525 / 60 (NTSC); 625 / 50 (PAL)		
		Electronic shutter		1/60 ~ 1/10,000 sec		
	Image	Resolution		480 lines	380 lines	380 lines
		S/N ratio		> 48 dB	> 48 dB	> 48 dB
	Optics	Aperture		F 2.0		
		Focal length		6.0 mm		
		Light sensitivity	color	0.8 lux	1.0 lux	1.0 lux
			B/W	---	---	0 lux
	IR illumination		---	---	9 LEDs	
	Pan / Tilt	Moving range	pan	355°		
			tilt	90°		
		Moving speed	manual	0.45, 3, 12, 30, 60, 120, 180° / sec		
call preset			300° / sec			
		auto scan	0.45, 3, 12, 30, 60, 120° / sec			
Dwell			1, 5, 10, 30 seconds			
Preset		total	32			
	group	4				
Auto - run		Group / Line				
network	Compression		MPEG-4 / MJPEG dual			
	Networking		Fast Ethernet 100T / 10T			
	Protocol		HTTP; TCP/IP;UDP;SMTP; FTP; NTP			
			DHCP; PPPoE; DDNS, uPNP			
	Maximum frame rate		30 fps			
	Bit rate		64K, 128K, 256K, 512K, 768K, 1M			
	Image size option		720x480; 352x240; 176x120			
	Event management		e-mail, FTP, SMS			
	Data rate option		Bit rate, Video quality, Resolution			
	Audio function		Yes			
	Authority control		Administrator, General user			
UI language		Multiple				
measurement	Dimension	D x H mm	121 x 138			
	Weight		454 gm	454 gm	474 gm	
	Power	Voltage	DC 12V			
		Consumption	6W	6W	8W	
	Temperature	Operation	- 10 ~ + 40°C			
		Storage	- 20 ~ + 60°C			
Humidity	Operation	20 ~ 90% RH				
	Storage	20 ~ 90% RH				