

Vandal & Water-proof IP Camera

acuteSENTINEL a series of **acuteEYES** product family



- Outdoor camera for IP surveillance
- Sony Super HAD sensor
- Vari-focal lens
- Optional WDR (Wide-Dynamic-Range) ^{and} ICR
- MPEG-4 / MJPEG dual compression
- D1, CIF and QCIF resolutions
- Support DDNS, DHCP, PPPoE, uPNP, SMTP, FTP
- IR LEDs (x12) for night illumination
- Accessible by IE and 16-CH software
- Water-proof and vandal resistant

Vandal ● Water proof ● Network ● Night vision .

An acuteSENTINEL camera is a Vandalⁿ water-proof camera incorporating a modern network video server .

The acuteSENTINEL line is primarily for outdoor surveillance. The camera is built with heavy duty housing, which provides vandal and water resistance ability. At the front lens is surrounded by 12 IR LEDs to supply illumination in dark scene.

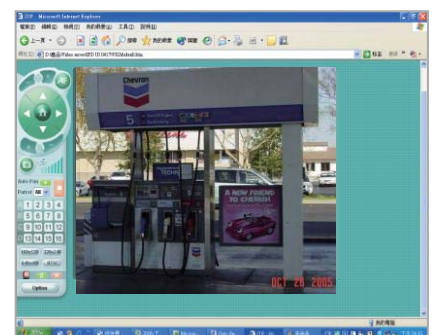
All the acuteSENTINEL cameras use 480-line high resolution Sony CCD sensor, for delivering colorful and detailed image. Automatically the image will turn to B/W mode, which give less video noise than color mode, when IR LEDs are switched on in low-light scene. The function helps IP camera for better performance on video compression and transmission.

Lenses used for acuteSENTINEL are vari-focal type, for obtaining the best view scope for each surveillance site. Lens controls are accessible through the window on bottom.

The video server in acuteSENTINEL is dual compression of MPEG-4 and M-JPEG. It supports the most IP protocols such like DHCP, DDNS, PPPoE, uPNP, FTP, SMTP,.... so the cameras can fit most networking environments (public and virtual IP, both fixed and dynamic, NAT...). Setup and controls are carried out via browser-based software acuteESCORT, with 6 languages in menu's option list. The acuteBASE, a 16-CH software for the entire acuteEYES product family, is provided for recording, system application and management. To match up the actual Internet bandwidth for the optimum transmission quality, user may adjust data volume by changing image size among large (VGA), medium (CIF) to small (QCIF), and bit rate.

Software based motion detection function is available in menu. Notification at the detection of intruder can be arranged through the software, too.

Currently there are two models in this series – acuteSENTINEL^{TDN} (480-line resolution, ICR and WDR), and acuteSENTINEL^{V9} (480-line high resolution, IR pass). WDR (Wide-Dynamic-Room) is a practically useful function that gives the camera much better capability to handle the wide variation of nature-light existing in most outdoor surroundings.



			acuteSENTINEL ^{TDN}	acuteSENTINEL ^{V9}		
camera	Sensor	Type	Sony Super HAD color CCD			
		Size	1/3 inch			
		Scanning	line / field	525 / 60 (NTSC); 625 / 50 (PAL)		
		Electronic shutter	1/60 ~ 1/10,000 sec			
	Image	Resolution	480 lines	480 lines		
		S/N ratio	> 48 dB	> 48 dB		
	Optics	Aperture	F 2.0	F 2.0		
		Focal length	4 - 9.0 mm	4 - 9.0 mm		
		Light sensitivity	color	0.8 lux	1.0 lux	
			B/W	0 lux	0 lux	
IR illumination	Auto on-off (8 ~ 10 meters)					
network	Compression	MPEG-4 / MJPEG dual				
	Networking	Fast Ethernet 100T / 10T				
	Protocol	HTTP; TCP/IP;UDP;SMTP; FTP; NTP				
		DHCP; PPPoE; DDNS, uPNP				
	Maximum frame rate	30 fps				
	Bit rate	64K, 128K, 256K, 512K, 768K, 1M				
	Image size option	720x480; 352x240; 176x120				
	Event management	e-mail, FTP, SMS				
	Data rate option	Bit rate, Video quality, Resolution				
	Audio function	Yes				
	Authority control	Administrator, General user				
UI language	Multiple					
measurement	Dimension	W x H x D mm	69 x 67 x 178 mm			
	Weight	include top cover	1050 gm	1000 gm		
	Power	Voltage	DC 12V			
		Consumption	8W	8W		
	Temperature	Operation	- 10 ~ + 40°C			
		Storage	- 20 ~ + 60°C			
	Humidity	Operation	20 ~ 90% RH			
		Storage	20 ~ 90% RH			

About **IP67**

IP stands for **I**ngress **P**rotection

An IP number is used to specify the environmental protection of enclosures around electronic equipment. These ratings are determined by specific tests. The IP number is composed of two numbers, the first referring to the protection against solid objects and the second against liquids. The higher the number, the better the protection.

